

10/6/2020
Class Period 6 or 7

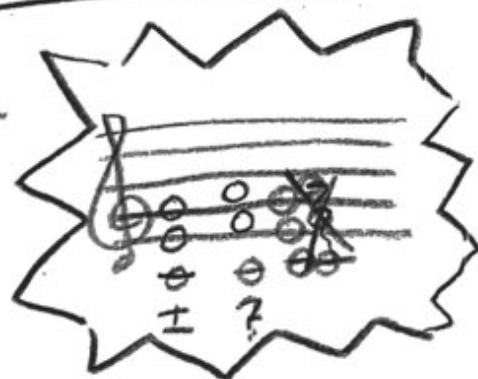
Piano - Ms. Morrey
Your name: _____

1 octave scales to know!

C: C D E F G A B C

G: G A B C D E F# G

D: D E F# G A B C# D

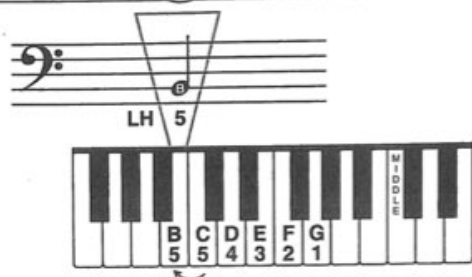


Cadences (Root position)

	I	IV	V	I
C	G E C	G F F	D B G	G E C
G	D B G	G E E	A F D	D B G
D	A F# D	D B G	E C# A	A F# D

How would you play these
in "close position"?

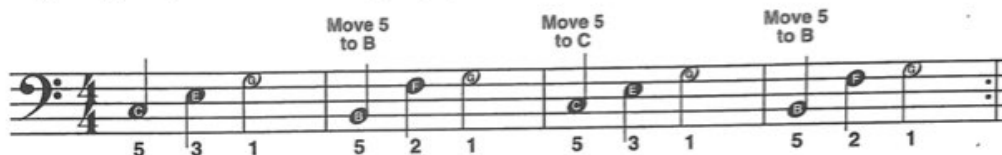
Introducing (B) for Left Hand



TO FIND B:

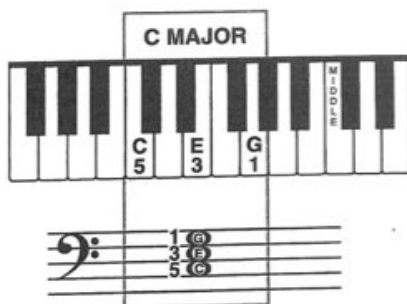
Place the LH in C POSITION.
Reach finger 5 one white key to the left!

Play slowly. Say the note names as you play.

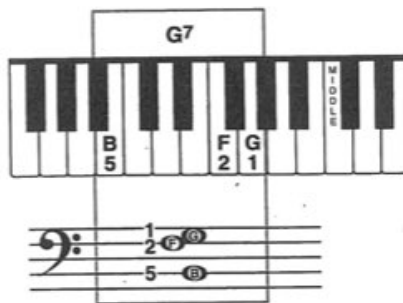


Two Important Chords

Two frequently used chords are C MAJOR & G⁷.



Chord symbol: C



Chord symbol: G⁷

Chord symbols are always used in popular music to identify chord names.

Practice changing from the C chord to the G⁷ chord and back again:

1. The 1st finger plays G in both chords.
2. The 2nd finger plays F in the G⁷ chord.
3. Only the 5th finger moves out of C POSITION (down to B) for G⁷.



Introducing **B** for Right Hand



TO FIND B:

Place the RH in **C POSITION**.
Reach finger 1 one white key to the left!

Play slowly. Say the note names as you play.

C & G7 Chords for Right Hand

It is very important to be able to play all chords with the **RIGHT** hand as well as the **LEFT**.
Chords are used in either or both hands in popular and classical music.

Practice changing from the C chord to the G7 chord and back again:

1. The 5th finger plays G in both chords.
2. The 4th finger plays F in the G7 chord.
3. Only the 1st finger moves out of C POSITION (down to B) for G7.

TIED NOTES: When notes on the *same* line or space are joined with a curved line, we call them *tied notes*.

The key is held down for the **COMBINED VALUES OF BOTH NOTES!**



Count: "1 - 2 - 3 - 4, 1 - 2 - 3 - 4."

MERRILY WE ROLL ALONG

Play the RH & LH separately at first, then together. Practice the RH *mf* and the LH *p*. The melody should always be clearly heard above the accompaniment.

Merrily

mf *p* (TIED NOTES!)

LARGO (from "The New World")

This melody is also known as "Going Home."

Slow *mf* *p* Dvořák

*In most popular sheet music, the chord symbols appear ABOVE the RH melody. The symbol appears ONLY WHEN THE CHORD CHANGES.